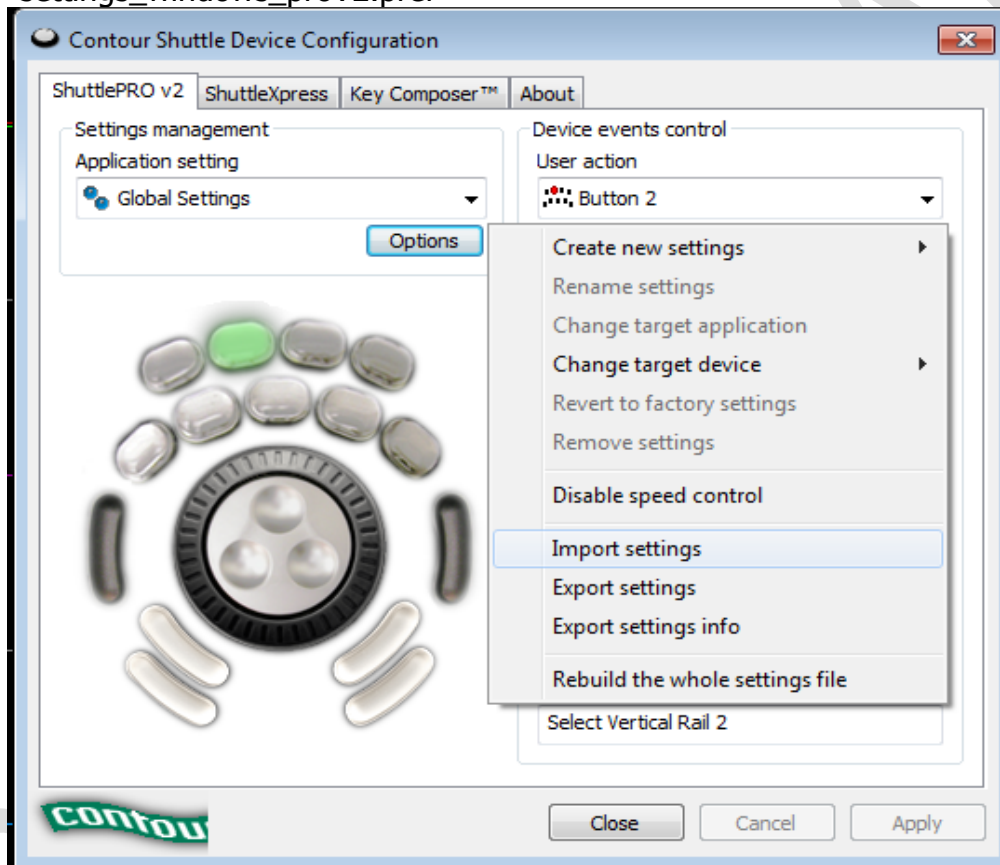


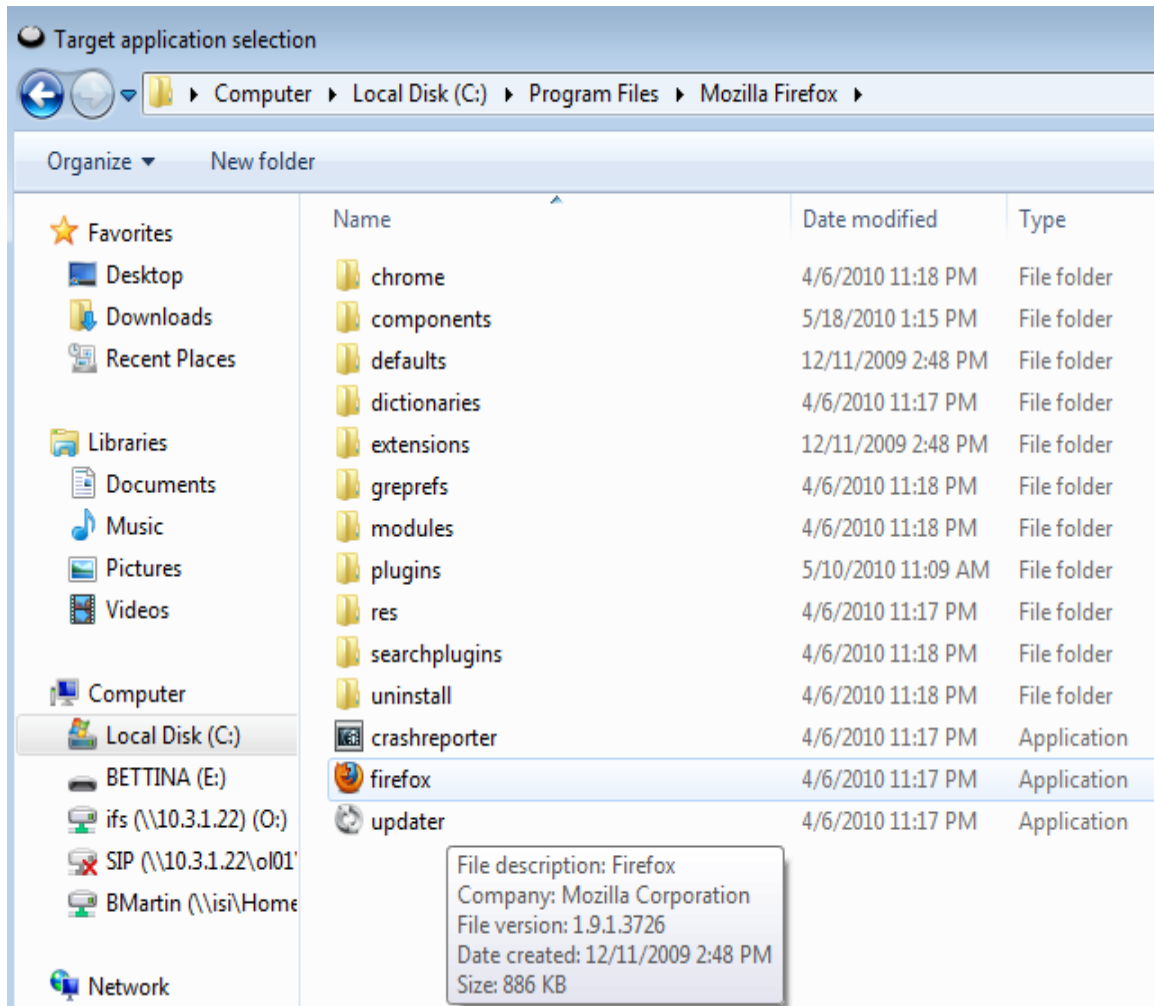
Configuring the ShuttlePRO v2 for usage with 3flexControlCenter

For PC:

1. Install the Contour Shuttle driver
2. Open the control center through the icon in the taskbar
3. Select „Options->Import Settings” and choose the “settings_windows_proV2.pref”



4. Overwrite settings
5. Select Target application like for example Mozilla Firefox or any other web browser or Java for 3flexControl Center (C:\Program Files\Java\jre<VERSIONINFO>\bin or similar) and select „javaw.exe”) Example for choosing Firefox:



6. Go to "Options->Rename Settings" and name the settings depending on your target device you have chosen
7. Click on "Apply" and close the device wizard

For Mac:

Using the shuttle with Mac does only let you choose target applications which are in your application folder. Therefore you can load the settings file for "Safari" or you create a Global settings file which will be also supported by 3flexControl Center.

1. Install the drivers
2. Open the control center through the icon in the taskbar

Using the Shuttle with Safari:

3. In the "Application setting" select "Import Settings" and choose the "safari_settings".
4. Close window

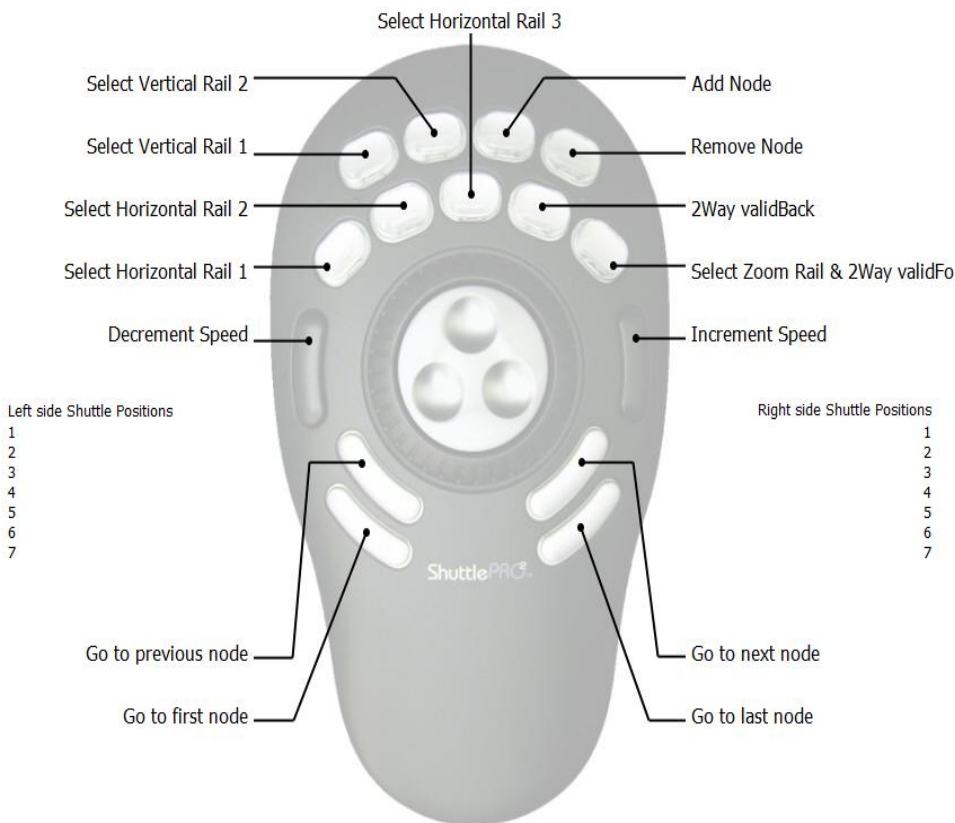
Using the shuttle with 3FlexControl Center:

Since you cannot pick 3flex as a target application on Mac OS you need to set global settings in order to use your shuttle for 3Flex Control Center. To create a Global file open the Shuttle Device Configuration and set your Commands to Type Keystroke according to this list by pushing the keys after a button is selected:

Button 1	CTRL+a	(Height)
Button 2	CTRL+b	(Pitch)
Button 3	CTRL+p	(Zoom)
Button 4	CTRL+m	(Zoom)
Button 5	ALT+a	(3D R Front)
Button 6	ALT+b	(3D R Back)
Button 7	ALT+c	(3D L Back)
Button 8	ALT+y	(empty)
Button 9	ALT+z	(Zoom)
Button 10	ALT+w	(Jump to previous Node)
Button 11	ALT+e	(Jump to next Node)
Button 12	ALT+q	(Jump to first Node)
Button 13	ALT+r	(Jump to last Node)
Button 14	CTRL+d	(Decrement step size)
Button 15	CTRL+I	(Increment step size)

Turn Jog Left	down (push the down arrow)	(Decrement value)
Turn Jog Right	up (push the up arrow)	(Increment value)
Transition 1 to 2	SHIFT+ALT+f	(Select Far Target)
Transition -1 to -2	SHIFT+ALT+n	(Select Near Target)

Be aware that the settings are global settings. If you are in any other application or on your desktop and you are using the shuttle buttons it will send the set keystrokes to the application.



3flexCenter